



Operating Manual – Configure Software



Document ID MANUAL-1899207337-25
Date: August 2022

This confidential document was prepared by the staff of Valeport Limited, the Company, and is the property of the Company, which also owns the copyright therein. All rights conferred by the law of the copyright and by virtue of international copyright conventions are reserved to the Company. This document must not be copied, reprinted or reproduced in any material form, either wholly or in part, and the contents of this document, and any method or technique available there from, must not be disclosed to any other person whatsoever without the prior written consent of the Company.

© 2022 Valeport Ltd

Valeport Ltd
St Peter's Quay
Totnes TQ9 5EW
United Kingdom

Phone: +44 1803 869292
email: sales@valeport.co.uk
Web: www.valeport.co.uk

As part of our policy of continuous development, we reserve the right to alter, without prior notice, all specifications, designs, prices and conditions of supply for all our equipment

Contents

1	Introduction.....	3
1.1	Limitations.....	3
2	Installation.....	4
3	Software Settings - Set Up.....	7
3.1	Manually Load a .json File.....	8
3.2	Check for Configure App Update.....	10
4	Setting Up the Software.....	11
4.1	Snapshot.....	13
4.2	Ethernet Interface.....	14
5	Software Operation.....	15
5.1	Using the Software with a Modbus enabled Instrument.....	16
6	Manual Commands.....	17

1 Introduction

Valeport Configure is a generic program developed to operate with a number of Valeport Instruments; a specific module being loaded for each.

This manual describes version 2.0.65 onwards, if you have an earlier version it is recommended to upgrade to the latest version in order to benefit from the latest functionality. In addition to improvements in performance version 2.0.65 also introduces software version monitoring to help you keep up to date with the latest developments of both Configure Software and the Instrument modules.

Configure can be downloaded from <https://valeport.download>

Valeport Configure can be used with the following instruments, both serial and ethernet enabled instruments can be configured:

- Hyperion
- uvSVX
- uvSVP
- Bathy2
- minilPS2
- Type 804 and Type 804 ExP
- Type 810 and Type 812

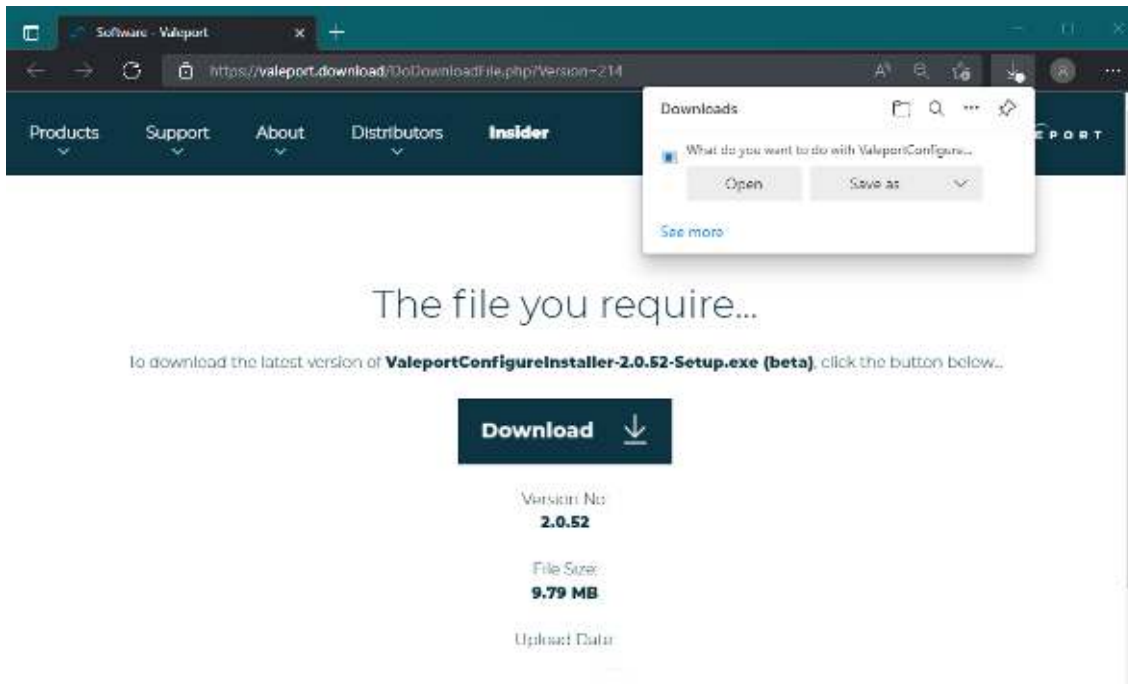
1.1 Limitations

There is no data collection or recoding available.

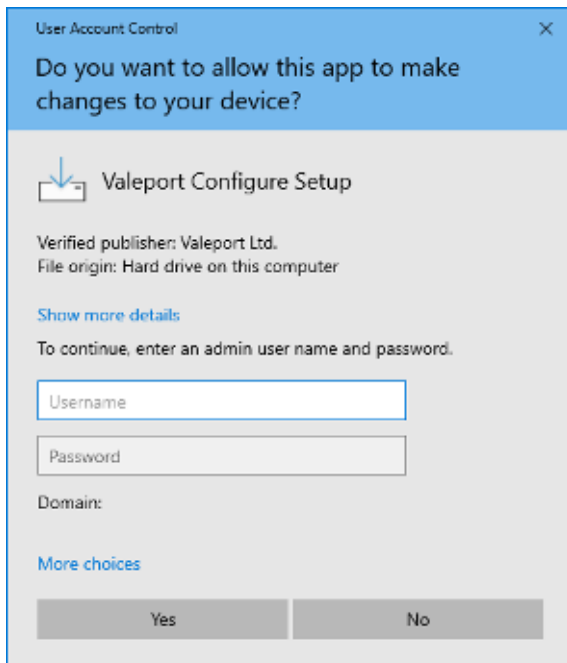
Data can be 'copied' from the terminal window and then 'pasted' into another package for analysis.

2 Installation

Download the software from <https://valeport.download>

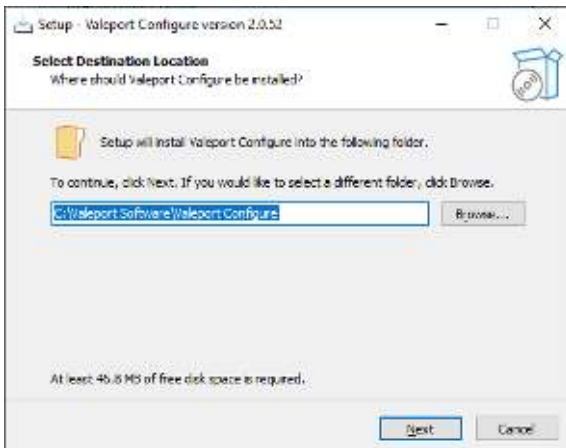


Follow the directions on screen. You may require additional IT support to do this.



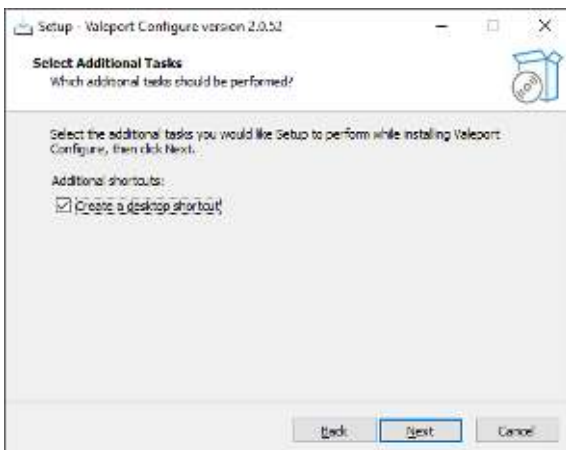
Section 2 | Installation

Continue to follow the on-screen instruction, select a new destination folder if required:

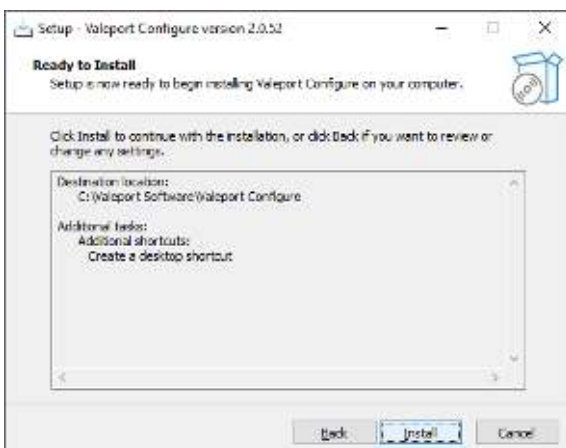


Next

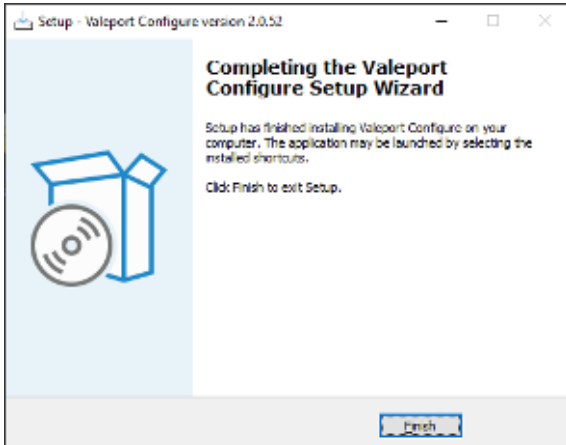
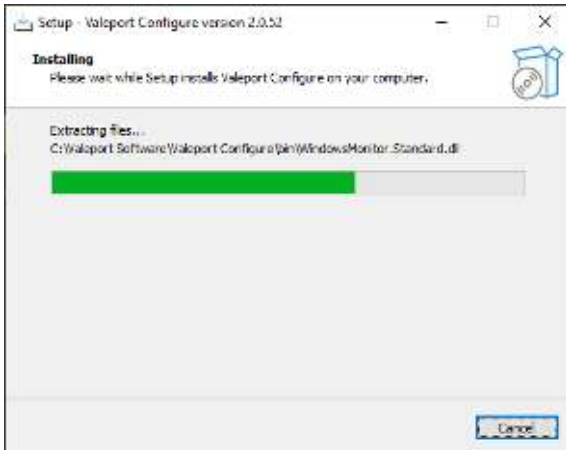
Select a desktop icon if required:



Next



Check your installation criteria and press **Install** to complete the process



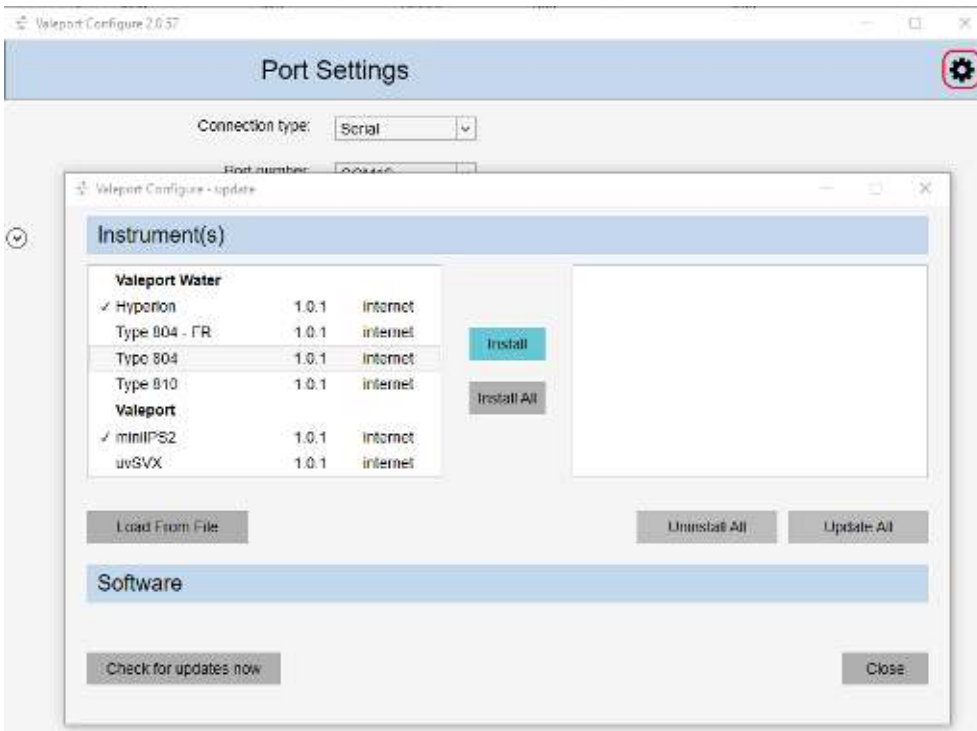
If selected a short cut will be placed on your desktop:




3 Software Settings - Set Up

On a primary installation, that is, no existing installation on the PC, click on the Set-Up Icon .

You will be presented with the following screen,



Select the instruments you will use with Configure from the left-hand window and click , alternatively install all:

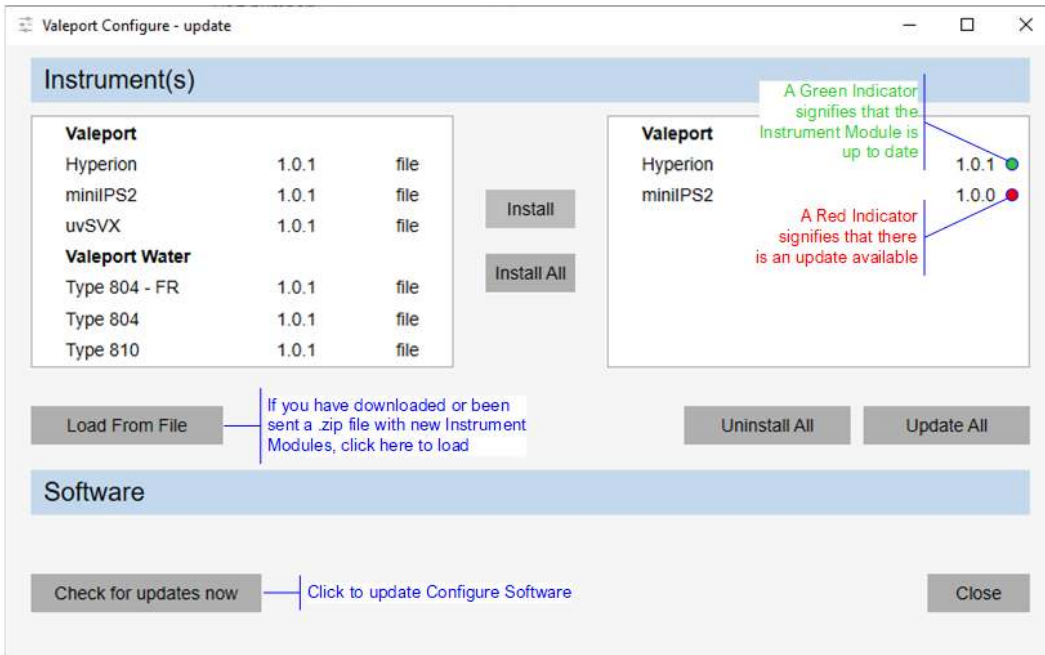


Once installed the right-hand window will look like this:



The Hyperion and miniIPS2 modules are up to date as shown by the green indicators

After the initial installation, if you are on-line, you will be notified of any updates to an instrument module; there are indicators to help identify those files that need to be updated.



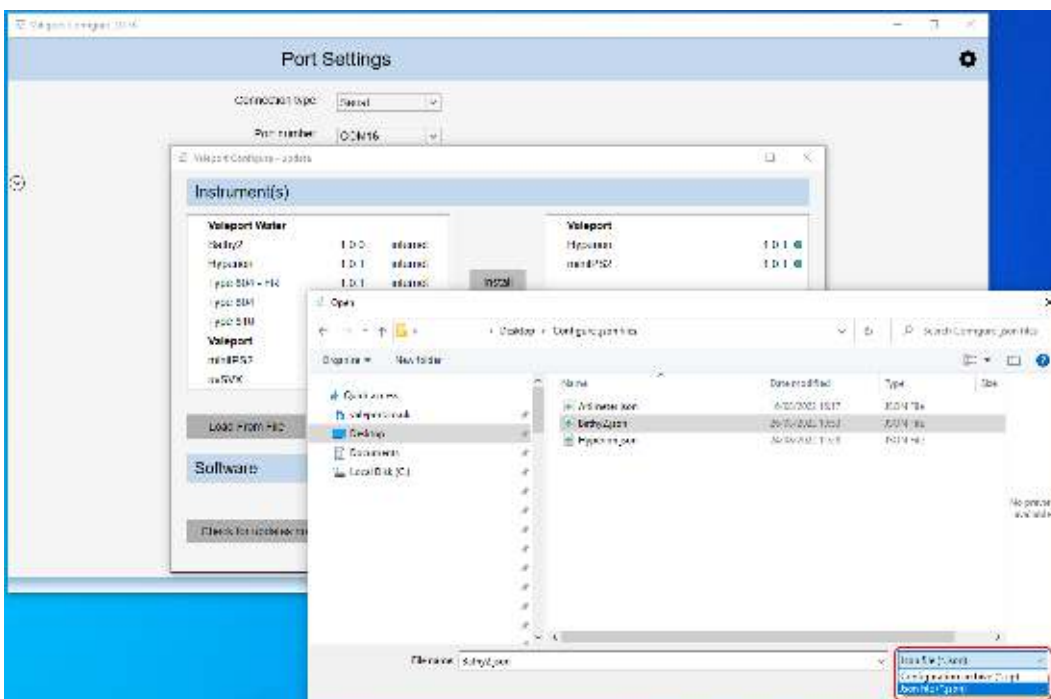
3.1 Manually Load a .json File

If you are not 'on-line' you can update the Instrument Modules manually – they will have a .json extension. There are .json files of all the Instrument Modules available on Valeport.Download. Equally a .json file could be emailed to you or downloaded prior to going to the field.

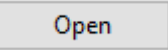
Similarly, Valeport can supply special Modules should that be necessary.

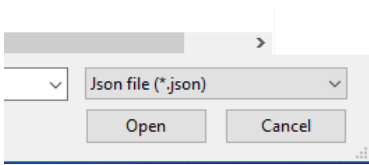
When you receive a .json file first, save it to a local directory. In the example that follows – Bathy2.json.

Click **Load From File** find the required .json file and selected it. Note, be sure to select .json from the file type dropdown list, bottom right

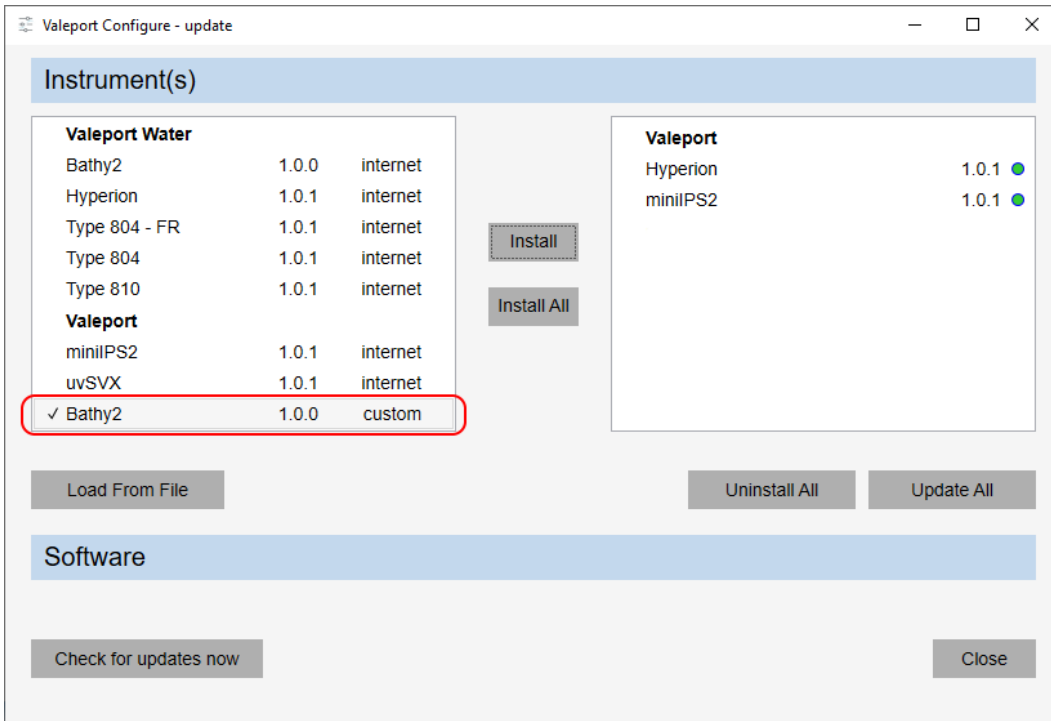


Section 3 | Software Settings - Set Up

Click 

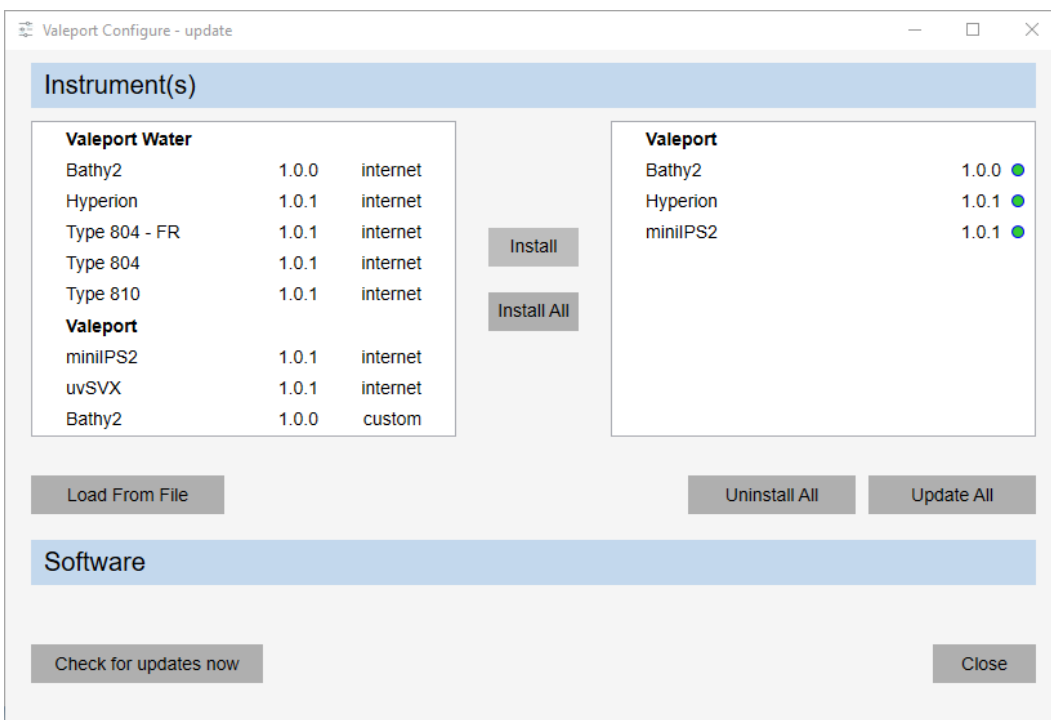


This will copy the .json file so it is available in the Instrument(s) options window:



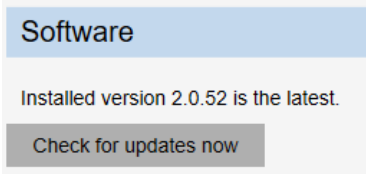
Select the 'custom file' (shown as ticked above) and then Click .

The file will now be available to use:

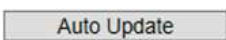


3.2 Check for Configure App Update

Clicking on **Check for updates now**, when on line will check the installed version against the latest available from Valeport.Download. If it is up to date you will be informed:



If there is an update you will be presented with the following window:



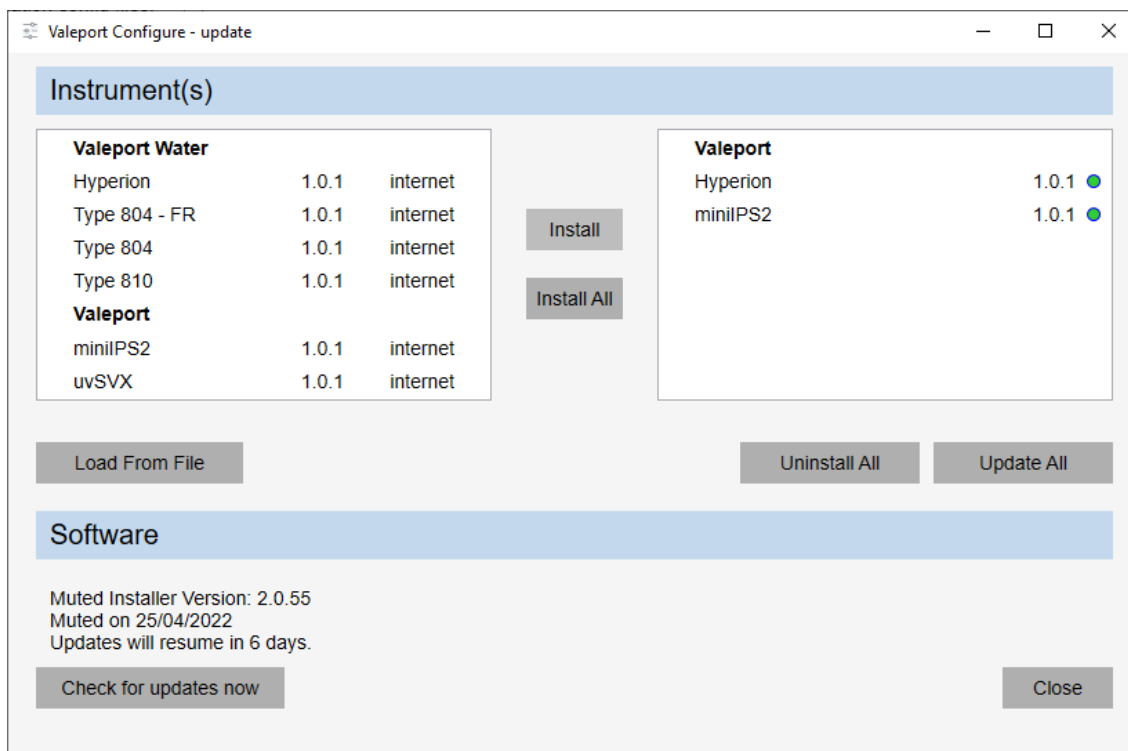
the software will be loaded onto your PC leaving your existing Instrument modules in place



you will be taken to the Valeport.Download site where you can download the software manually and install at your leisure.



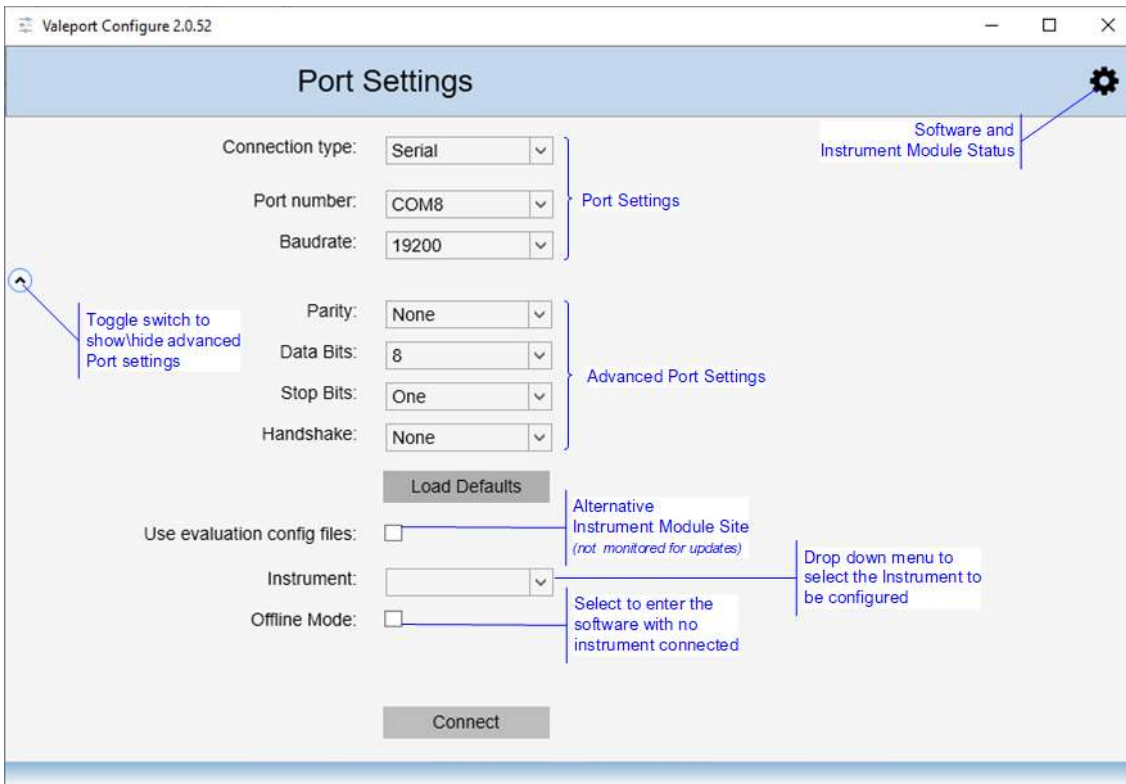
if you would rather not load the new version you can ‘mute’ the upload for 7 days after which you will be informed again as shown below:



4 Setting Up the Software

On running up the software you will be presented with the following Interfacing window.

By default, the software will be set to serial, the port number and baud rate used in your last session



Set your COM port as required.

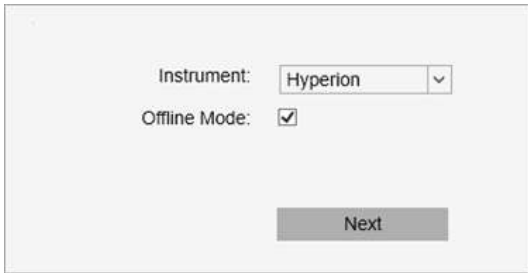
Use the drop-down menu to select your instrument, only those installed from the software and Instrument Module dialogue will be shown.

Click on the **Connect** button to interface to the instrument and enter the software.

Should there be an issue with the connection or the baud rate, after a short delay you will be presented with the following screen. Investigate the issue and try again:



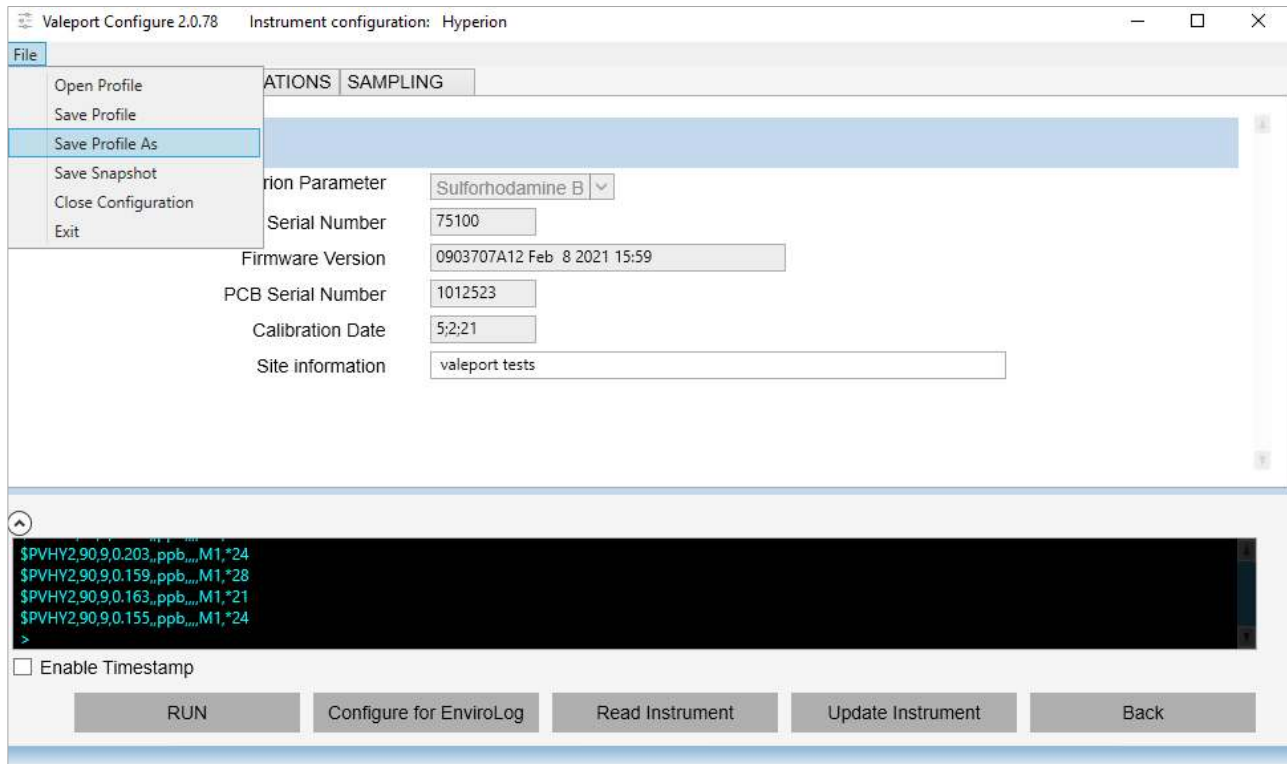
If you have no instrument connected to the software you can still enter the Configurator by ticking the Offline Mode box.



Instrument:

Offline Mode:

In Offline Mode it is possible to set up a 'Profile' settings file of all the generic editable settings, but nothing specific to an instrument such as serial number, calibrations dates or site information. This file can then be loaded into sets of instruments to insure they all have identical setups.



Valeport Configure 2.0.78 Instrument configuration: Hyperion

File

- Open Profile
- Save Profile
- Save Profile As
- Save Snapshot
- Close Configuration
- Exit

DETECTION PARAMETER:

Serial Number:

Firmware Version:

PCB Serial Number:

Calibration Date:

Site information:

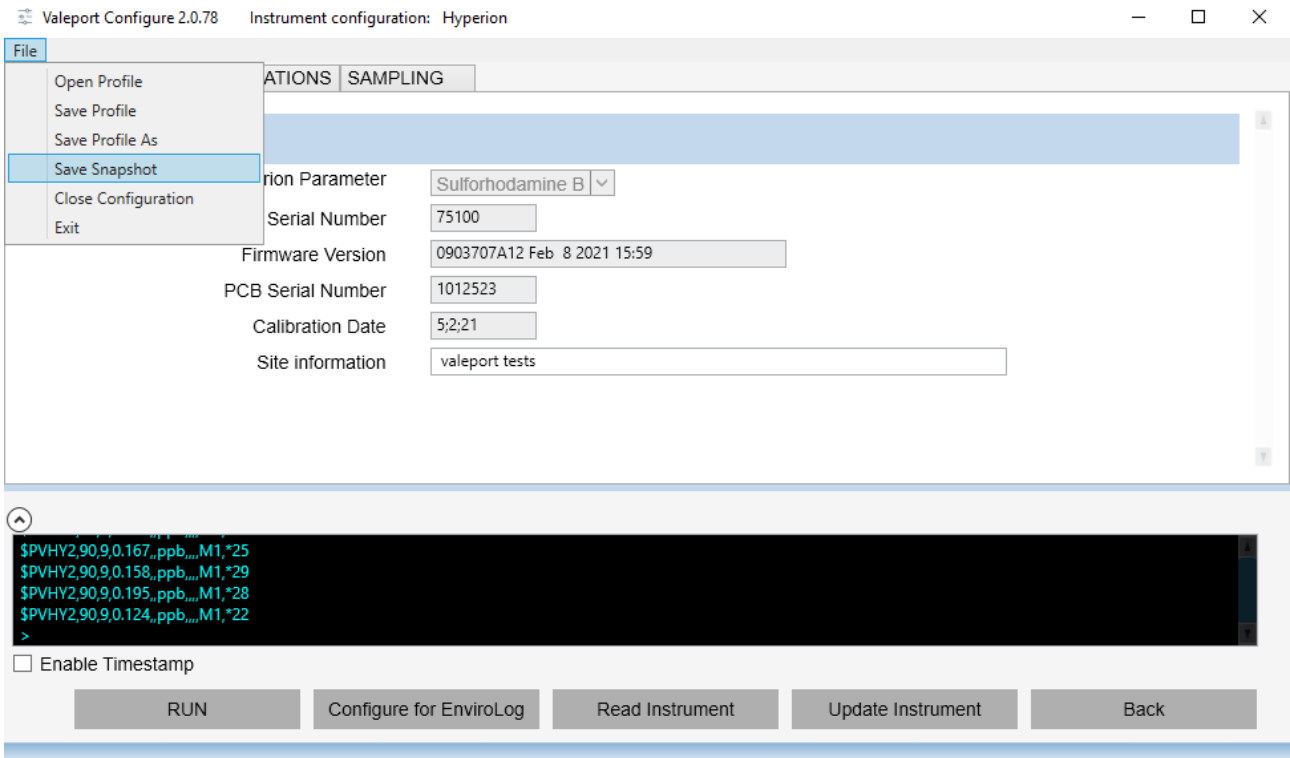
```
$PVHY2,90,9,0.203,,ppb,,,M1,*24
$PVHY2,90,9,0.159,,ppb,,,M1,*28
$PVHY2,90,9,0.163,,ppb,,,M1,*21
$PVHY2,90,9,0.155,,ppb,,,M1,*24
>
```

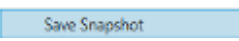
Enable Timestamp

Save the profile and use it in the future to set up instruments identically.

Open a Profile to load the settings into the software and then upload the settings into the instrument with the button

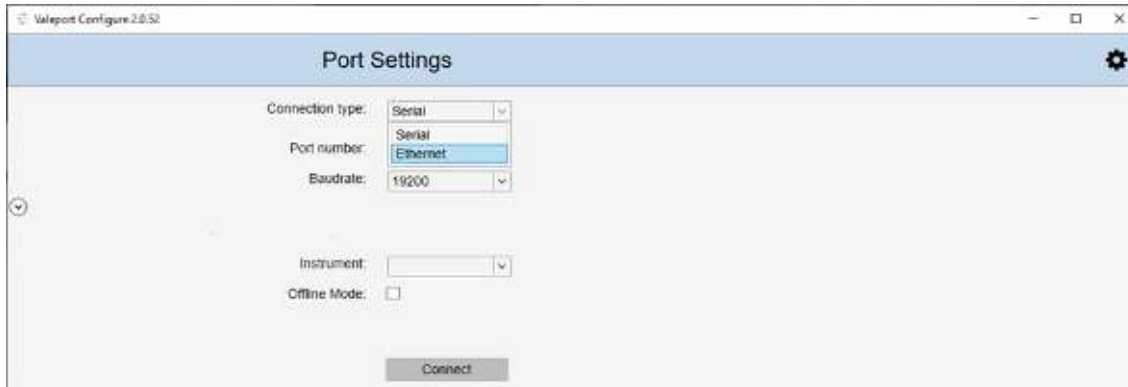
4.1 Snapshot



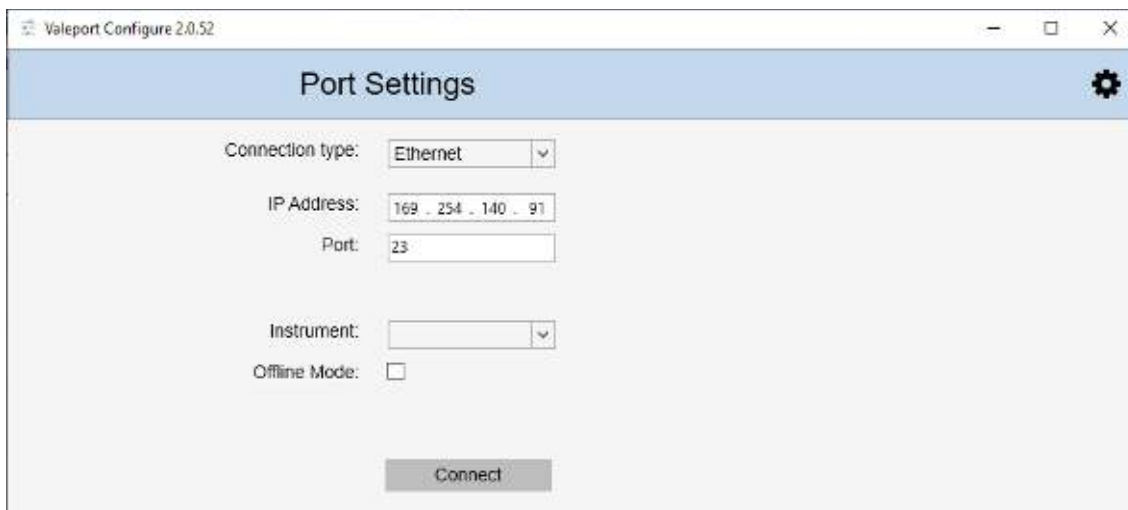
Click  to record a text file with all the settings recorded.

4.2 Ethernet Interface

The software can also be used in Ethernet protocol by using the drop-down menu option

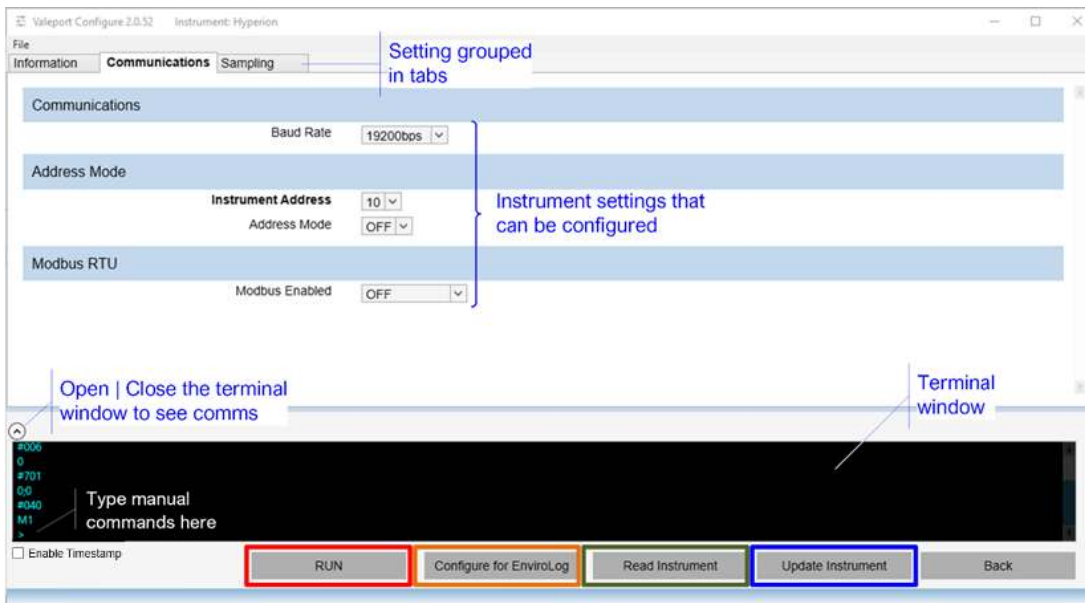


Edit the IP Address and Port as required:



5 Software Operation

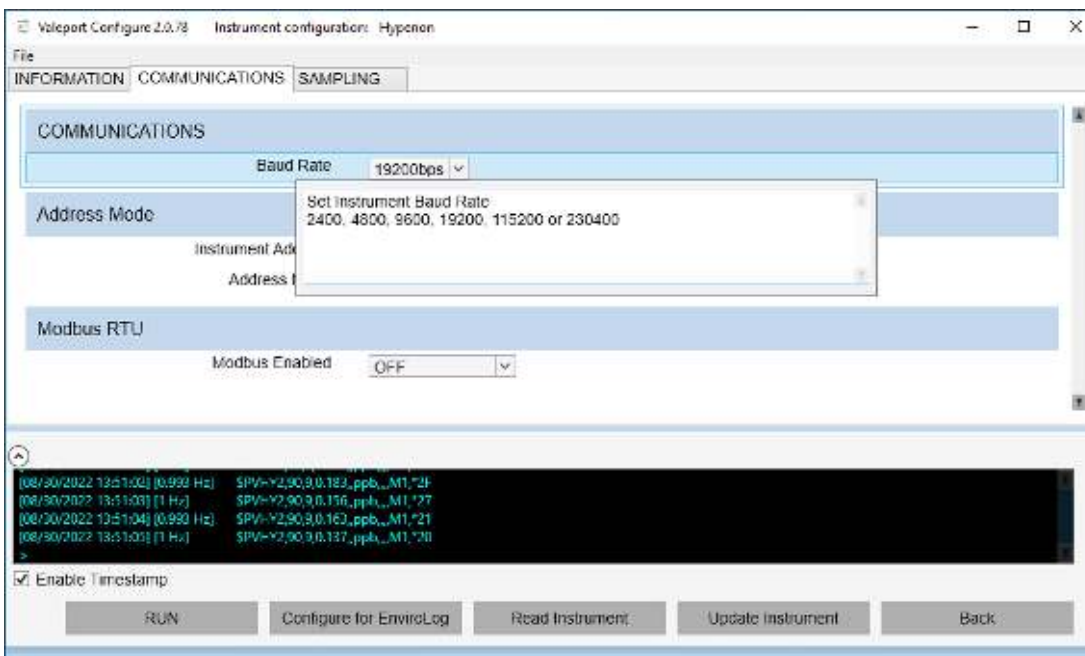
Once interfaced to the instrument you will be presented with the specific controls for that instrument. In the example below, a Hyperion. For details of a particular instrument you should refer to that specific manual.



There are function buttons across the bottom of the window, some are common to all instruments and some are specific to the instrument selected.

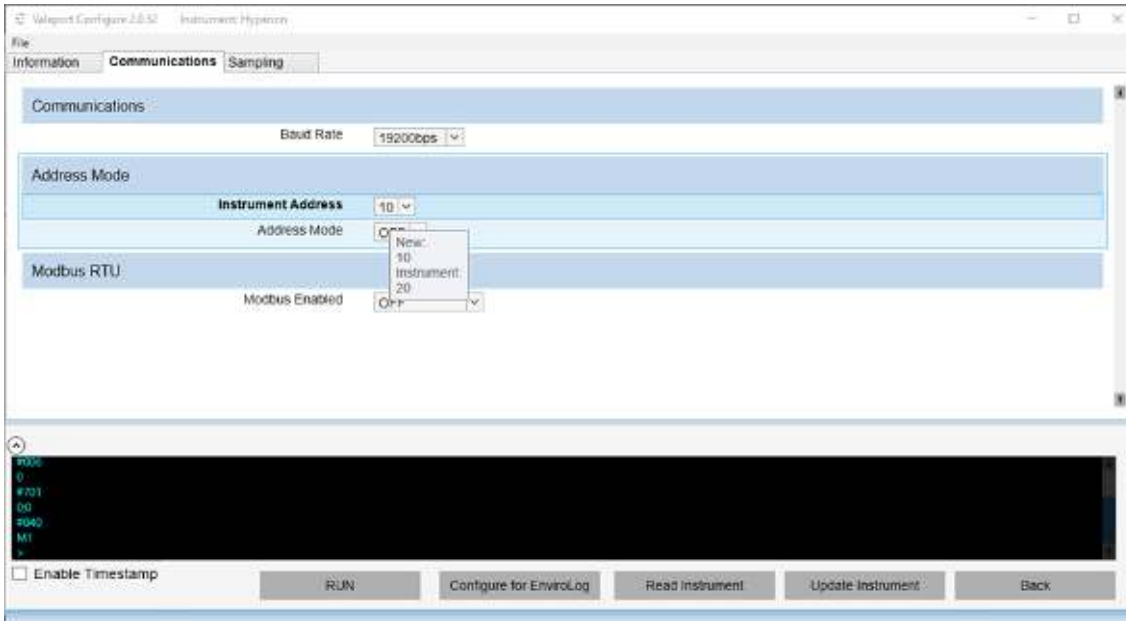
- Once in the software, click on the **Read Instrument** button to download the existing settings
- If you change any settings click on the **Update Instrument** to up load the new setting(s)
- Any special function buttons will appear here, in this example **Configure for EnviroLog**
- Once configured set the instrument to run mode after a watchdog period the instrument will return to run mode automatically
- The **Back** button will return you to the Interfacing window

If you hold the mouse over the label for a particular setting, a help window will appear. In the example below, Baud Rate.



Enable Timestamp select the Enable Timestamp option to include a timestamp on each line of data

If you change a setting, the label will become bold as will the Tab label. In the example below, the Instrument Address setting label and the Communications Tab title.



If you hold the mouse over the settings window the instrument’s setting status will appear. In the example above the new Instrument Address is 10, while the programmed Address is 20. Click on the **Update Instrument** button to upload the setting, that is 10, in the example above.

To set the instrument into a Run Mode select the **RUN** button at the bottom of the screen.

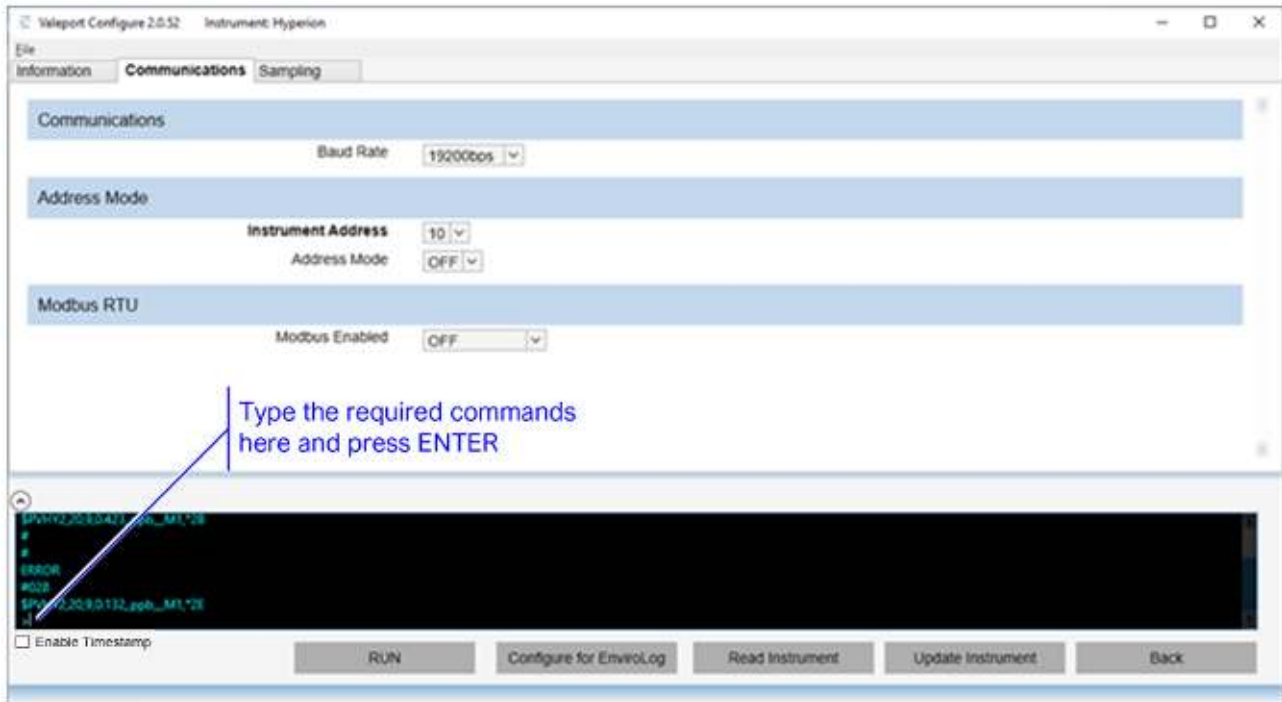
5.1 Using the Software with a Modbus enabled Instrument

In Valeport instruments there is a ‘fall back’ mode in which serial communications can be achieved with a Modbus enabled instrument without the need to reconfigure the terminal settings.

#098;1 will set the instrument into this mode. This is the default setting.

6 Manual Commands

If there is a requirement to send manual commands to the instrument, they should be typed into the terminal window as shown below:



First interrupt the instrument by sending multiple # symbols followed by the ENTER key. When you see ERROR, you have successfully interrupted the instrument. It is now in a command mode and will accept configuration commands.

In the above example #028 has been sent to put the unit into RUN mode. You can see a single data string after the #028 command is sent.

- Type #028 at the command prompt
- Press ENTER, ↵ on your keyboard